



The bi-weekly newsletter of the Montgomery County Intermediate Unit

MCIU CONNECTION

www.mciu.org

March 5, 2010

Celebrating Social Work Month MCIU Social Workers Assist Students, Families & Staff



The MCIU's team of four social workers deserve special recognition this month for the tremendous work they do on behalf of students, families, the MCIU and school districts. The staff consist of Amanda Snyder (pictured on left), Josie Reigner, Ellen Harris and Susan Walsh-Magoni. The social workers provide an integral role in the early intervention program, the MCIU school-age programs and the Anderson School. The staff conduct a number

of social skills groups and provide other counseling services that are extremely beneficial for students. "We help the students learn to follow direction, stay calm, make friends and gain other social skills," Amanda said. "Emotional support through group and individual counseling is so important to our student's success." The social workers also provide other MCIU staff with training and resources so they are better equipped to handle the emotional needs of students.

School districts also are focused on improving school climate to address a variety of social issues. The MCIU team has strong clinical skills and provides mental health consultative services as well as crisis intervention to many classrooms. Josie and Ellen were trained in Critical Incident Stress Management to be prepared to help districts in the case of a traumatic event. Several districts have contracted for weekly social work services where a social worker provides direct counseling for students and helps district staff in working with families and community agencies.

Assisting families with the medical assistance process has become another valued and necessary service of the social work team. In many cases, children would be unable to receive appropriate services due to their family's financial constraints. Amanda works closely with families to explain the complicated MA process and help cut through red tape, ensuring that the children receive services and the MCIU is reimbursed.

"We are a small but mighty department!" says Ellen.

"Great Finds" by the MCIU Staff

Dear Staff,

As Susan and I were dining in a new and wonderful Vietnamese restaurant on 611 and Easton Road Saturday evening, I thought about how we could share our "finds" with other MCIU staff who might enjoy them. So, starting with this edition of *Connections*, Kristen Rawlings, Editor, will include those restaurants, destinations, events, and other points of interest you have really enjoyed. You are encouraged to email those to her at krawlings@mciu.org and she will choose one or two for each edition. Only share what you have really enjoyed so that other employees of the MCIU can also enjoy them.

My find of the week is a new restaurant called Pho & Beyond, 47 Easton Road in Willow Grove (Go south from the turnpike on 611 and turn right on Easton Road. It is on the corner on the left of the first block). It is an authentic Vietnamese restaurant where everything from the food to the decor, music, and services, is outstanding. The restaurant is owned and operated by four Vietnamese families. The husband of one of the families owns the coffee shop, Morning Mug, on Ridge Pike west of the MCIU. Pho & Beyond is a delightful place for a great dinner of healthful and authentic Vietnamese cuisine. I hope you get the opportunity to enjoy it and I look forward to hearing your recommendations.

Sincerely,

Dr. Jerry W. Shiveley
Executive Director/CEO

Did you ever CHART YOUR OWN Destiny?

Nominate an exceptional teacher... Today!

Your teacher could win \$2,000!

Your school could win \$1,000!

Deadline for nominations: March 10, 2010

Sponsored by Freedom Credit Union & The Montgomery County Intermediate Unit

Reminder:

Visit www.voicesofinspiration.org to complete your nomination form today!!



**MONTGOMERY COUNTY
INTERMEDIATE UNIT**

An Educational Service Agency Supporting School Excellence

MCIU Connection

The bi-weekly newsletter of the
**Montgomery County
Intermediate Unit**

1605 W. Main Street
Norristown, PA 19403
610-539-8550

Dr. Jerry W. Shiveley

Executive Director/CEO

Jane W. Mansuy

Asst. Executive Director/

Director of Human Resources

Stan H. Wisler

Chief Financial Officer/

Director of Management Services

Kristen Rawlings

Director of Communications

**Questions? Comments?
Story Ideas?**

Contact Kristen Rawlings
krawlings@mciu.org or 610-755-9313



Trust in the Workplace

**A Continuing Series on Teachings from the
Jorgensen Learning Center**

At the January 23rd workshop with Dr. Ray Jorgensen, Stan Wisler, Chief Financial Officer, and Dr. Ken Voss, Director of Nonpublic School Services, provided a supplementary presentation on trust in the workplace. Among the discussion points, they shared the “13 Behaviors of High-Trust People and Leaders” as defined in “The Speed of Trust: The one Thing that Changes Everything” by Stephen M. R. Covey. These behaviors are as follows:

- * Talk Straight
- * Demonstrate Respect
- * Create Transparency
- * Right Wrongs
- * Show Loyalty
- * Confront Reality
- * Clarify Expectations
- * Deliver Results
- * Get Better
- * Practice Accountability
- * Listen First
- * Keep Commitments
- * Extend Trust

Wisler and Voss also highlighted these employee perceptions about trust:

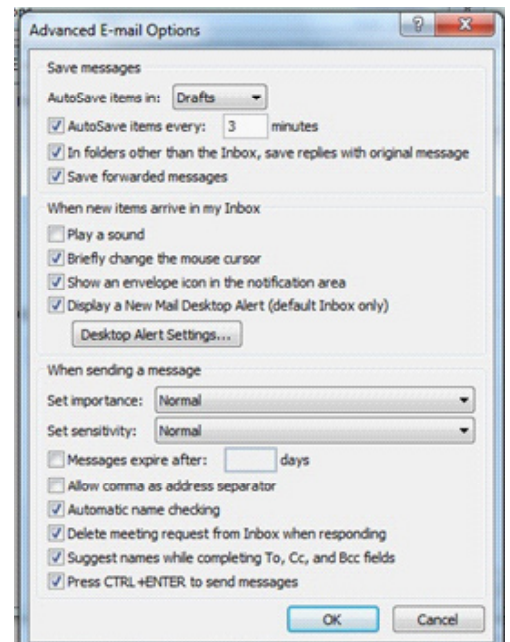
- * Experience destroys or builds trust
- * Outside influences can affect trust
- * Trust means honesty, confidence, loyalty, integrity, professionalism, friendship
- * Trust = Happy workers, Happy organization
- * Trust means faith, dependability, competence, sincerity
- * Trust must be earned
- * A person cannot grow or excel without trust
- * People depend on you
- * Trust is built

Tech Tip: Microsoft Outlook Inbox Notifications

Notifications can enhance productivity in Microsoft Outlook 2007 by notifying you when a new email message or calendar invitation arrives.

- To customize your notification options, click on Tools in the ribbon and choose Options
 - Click on the E-mail Options button on the Preferences Tab
 - Click on the Advanced E-mail Options Button
- Under the heading of “When new Items arrive in my Inbox” choose one to four options.

- Play a sound: Sends a tone through your speakers when a new message or invitation arrives.
- Briefly change the mouse cursor: This will change the appearance of your mouse pointer.
- Show an envelope icon in the notification area: Places an envelope in the bottom right corner of your screen.
- Display a New Mail Desktop Alert (default Inbox only): Briefly displays a window that includes the sender and subject line in the lower right corner of your screen. By clicking on the “Desktop Alert Settings” button, you can customize how long you’d like the message to appear and the transparency of the message window.



**MCIU
Snapshots**

The MCIU’s Transition Program was featured in “Redeemer Relations”, the Holy Redeemer Health System e-newsletter sent to 4,000 employees. A number of MCIU transition students work in various departments at Holy Redeemer.

The MCIU was also mentioned in the MAGPI Spring 2010 Newsletter SAFE-Net, for its role in offering a January training entitled “The Educator’s Role in Safe Computing,” highlighting how K-12 educators can raise awareness about cyber security and safety in the schools.