

A BEGINNERS GUIDE TO PROJECT BASED LEARNING

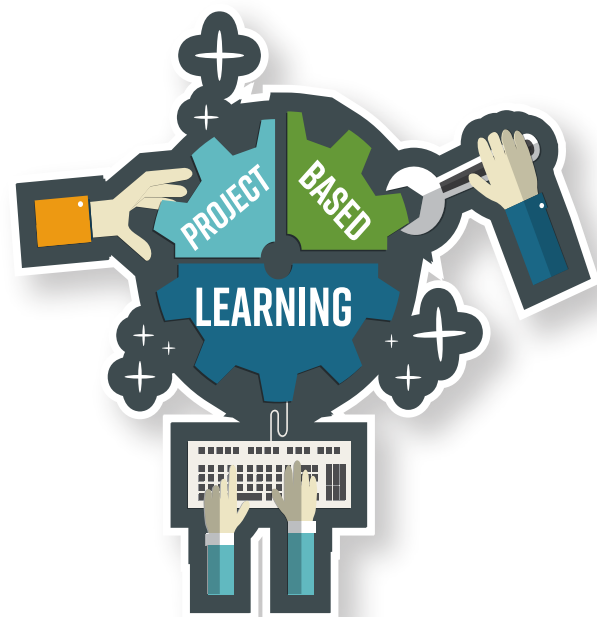


May 8, 2019 | 8:30 AM - 3:30 PM | 2 W. Lafayette Street, Norristown, Pa 19401

Project Based Learning (PBL) is a dynamic instructional approach where teachers provide real-world problems, challenges or complex questions to students so that they can gain a deeper understanding of content while developing critical thinking, creativity and communication skills. Do you find yourself wondering how to get started implementing and/or assessing PBL? This workshop will provide you with an overview of how to design an authentic project connected to your content as well as how to assess project based learning tasks.

AUDIENCE: General education, special education teachers, curriculum directors, etc.

PRICE: \$75 for Subscribers
\$175 for Non-Subscribers



Questions?
Please contact Lois Winton
(610) 755-9315 | lwinton@mciu.org

WWW.MCIU.ORG/REGISTER